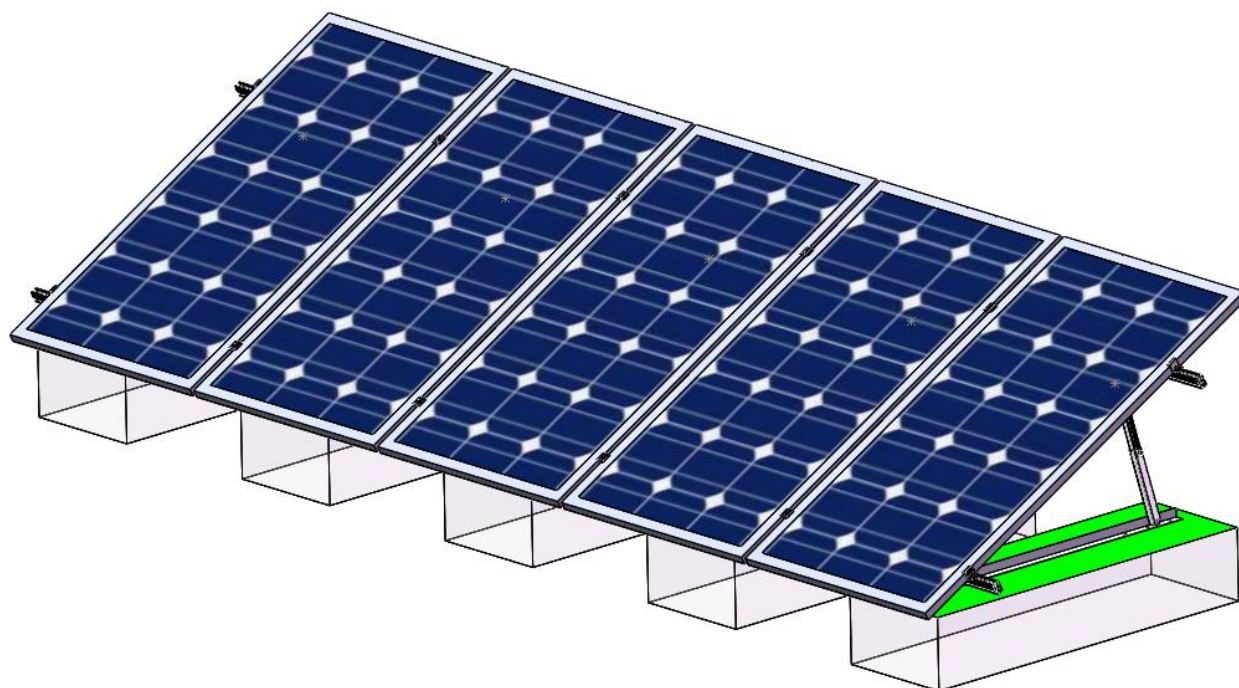


# Adjustable triangle installation manual





## 1. Component list

parts list	AR Pre-loaded with stents(HQ-AR-S)	W50B Rali (HQ-W50B)	W50B Splice for W50 Rail (HQ-SP-W50B)
picture			
materials	AL 6005-T5	AL 6005-T5	AL 6005-T5
parts list	Rali Clam (HQ-CR-01)	End Clam (HQ-EC01)	Mid Clamp (HQ-IC01)
picture			
materials	AL 6005-T5	AL 6005-T5	AL 6005-T5

## Instrument

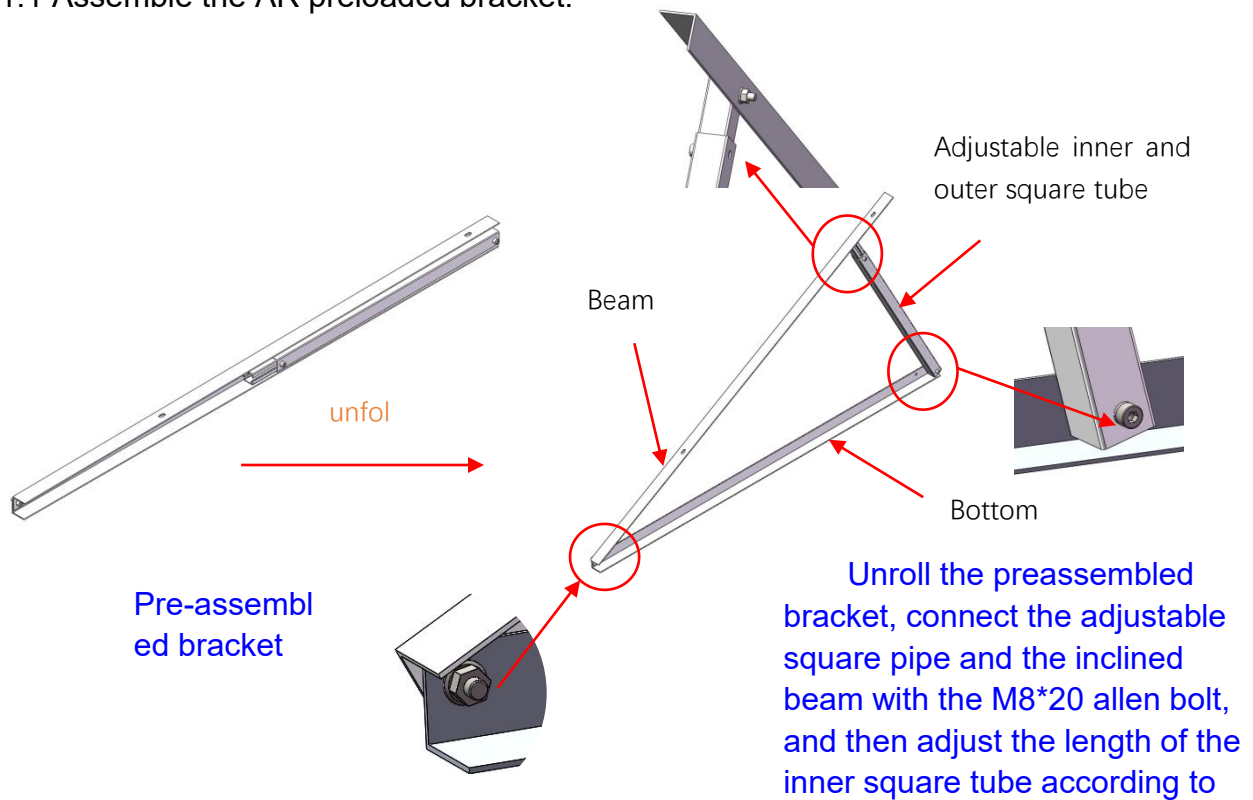
Hexagon socket wrench	Electrical drill	Tape measurement	Chalk
			



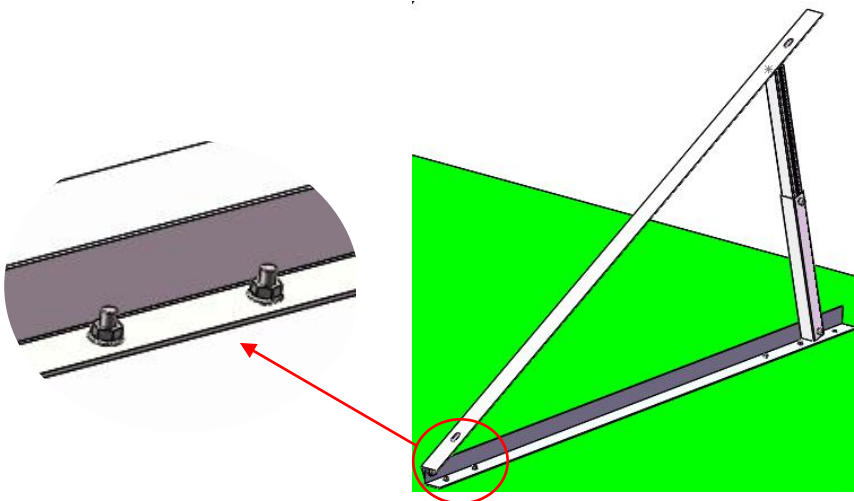
## 2. Installation Guide

### 2.1 Install the AR preassembled support

#### 2.1.1 Assemble the AR preloaded bracket.

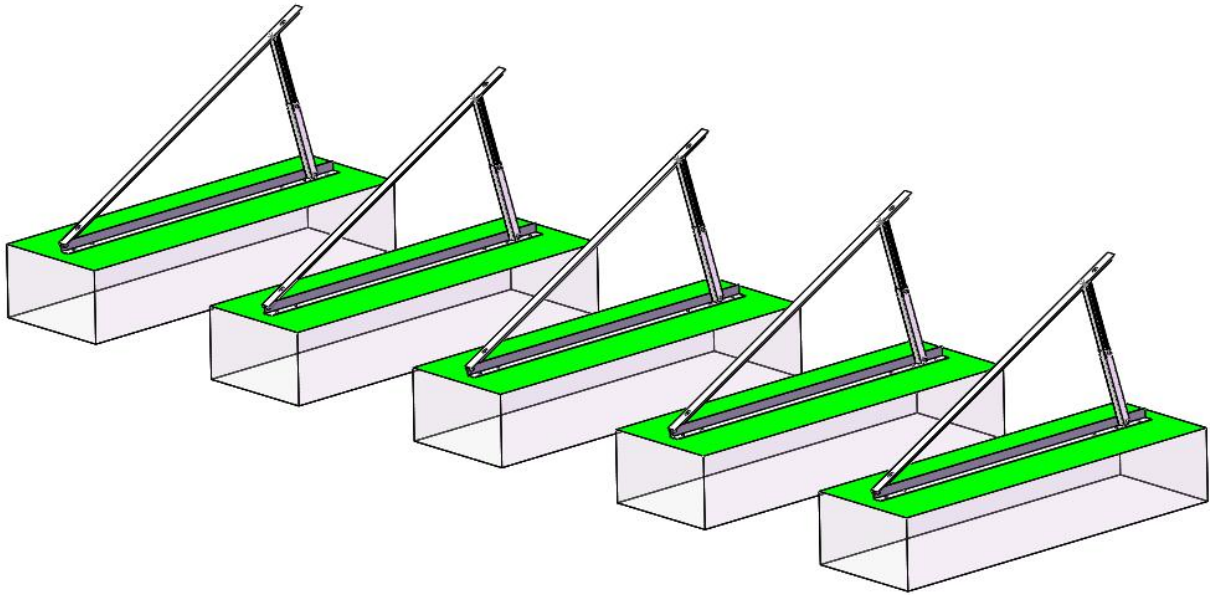


2.1.2 After assembling the AR preassembled support, install the pre assembled support to the position of the cement foundation and connect it with the anchor bolts embedded in M12\*150.



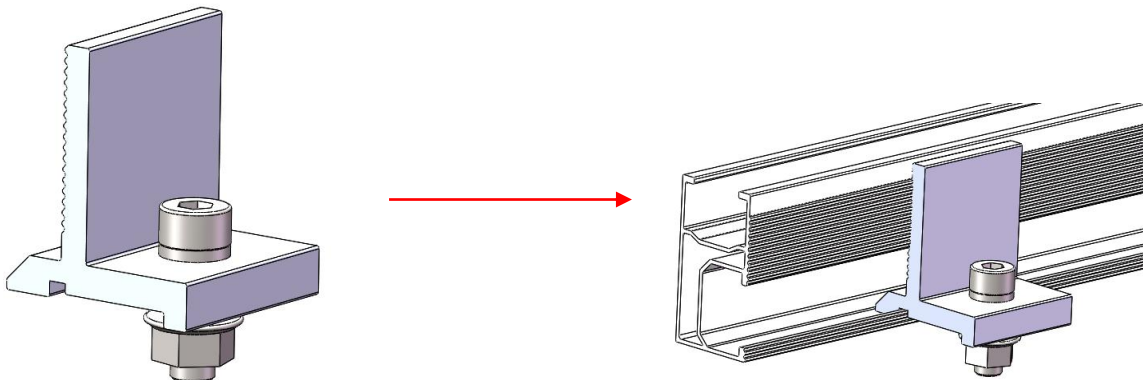


2.1.3 Repeat the operation in 2.2.2 to install the remaining pre-installed brackets, as shown in the figure below.



## 2.2 Install W50B rail

2.2.1 Before installing the W50B rail, assemble the rail clamp to the W50B rail without locking the bolts, as shown in the figure below.

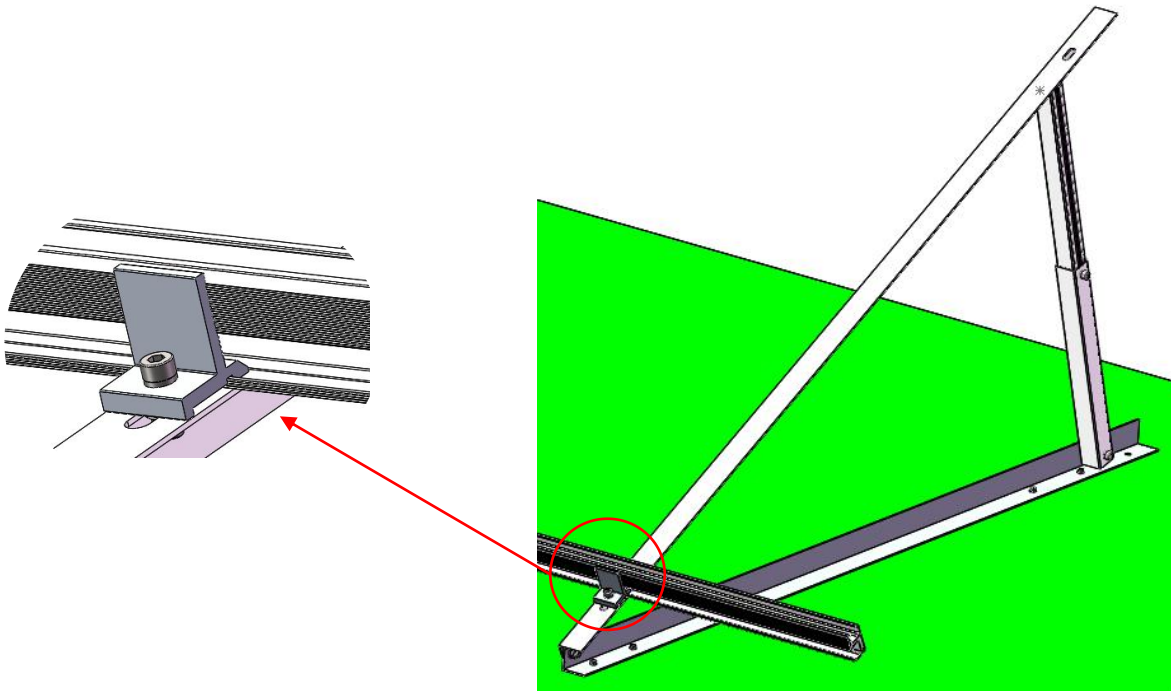


Rail clamp

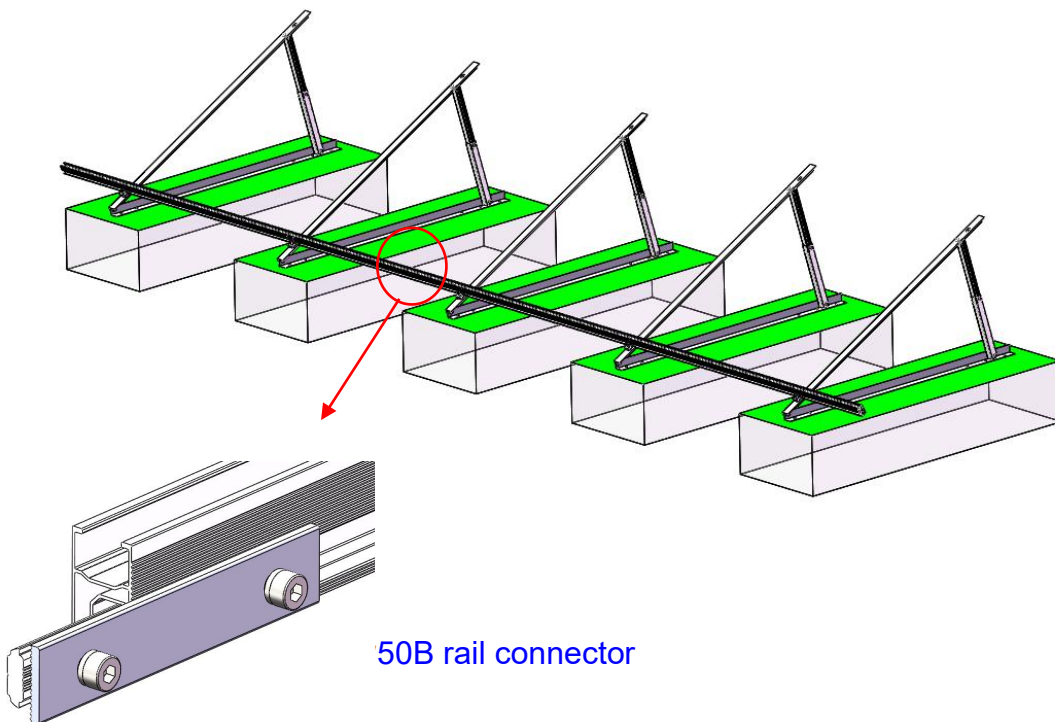
As shown above, the rail clamp is assembled to the W50B rail



2.2.2 Install the rail assembled in 2.3.1 on the pre-installed bracket as shown in the figure below.



2.2.3 If the rail is not long enough, please use the W50B rail connector to connect the two rails, as shown in the picture.

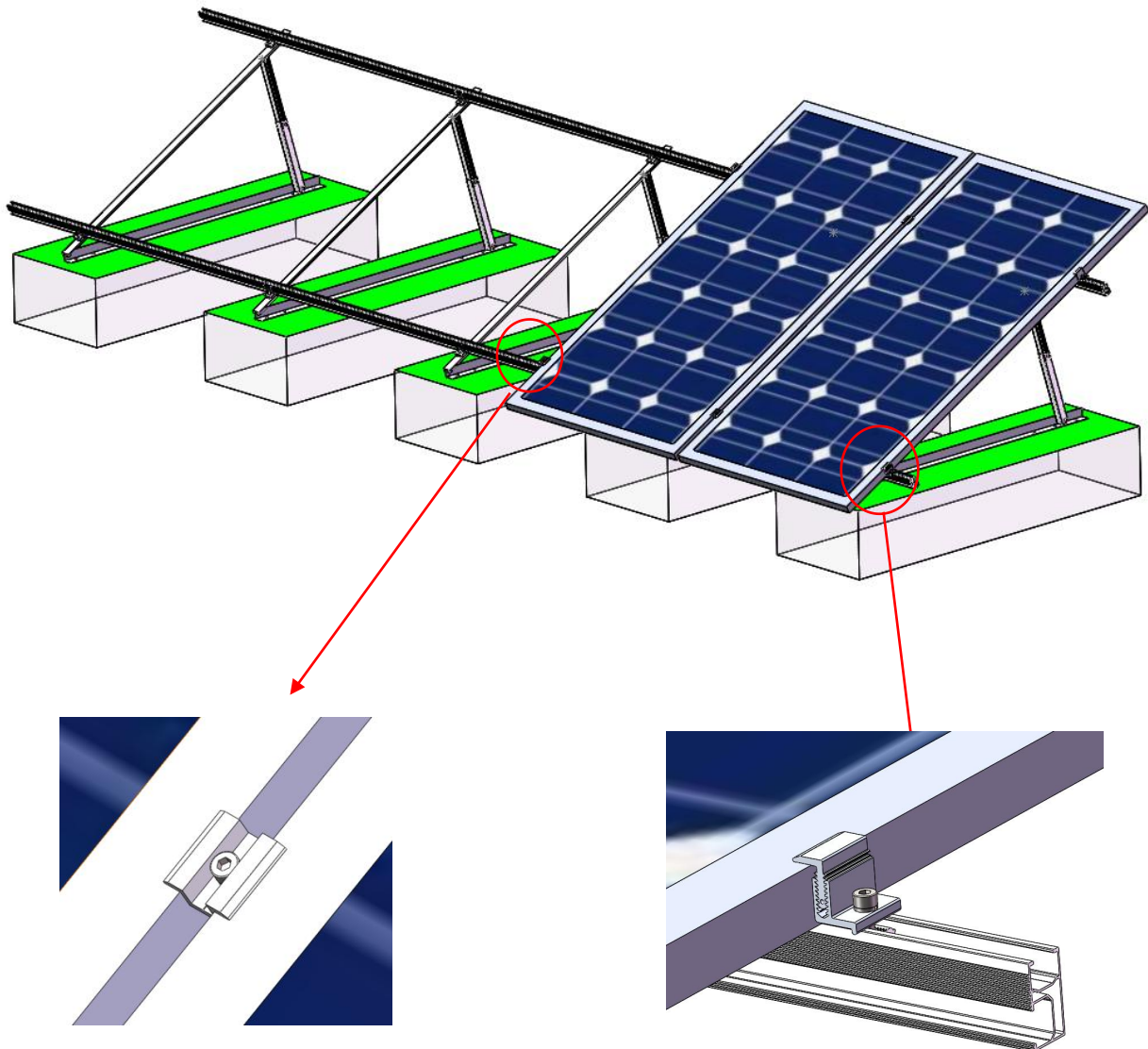


50B rail connector



## 2.3 Install solar panels

### 2.3.1 Securing the solar panel to the W50B rail with end and mid clamp.





## 2.4 Installation completed as following.

